



USCP

U.S. COMPOSITE PIPE, INC.

STEEL REINFORCED POLYMER CONCRETE

STRONG

DURABLE

ADAPTABLE

**WILL YOUR
DESIGN SERVE
THE NEXT
GENERATION?**

WET WELLS

MANHOLES

CUSTOM STRUCTURES

JACKING PIPE

TUNNEL SEGMENTS

DIRECT BURY PIPE

SIPHONS

WWW.USCOMPOSITEPIPE.COM

800 CR209 ALVARADO, TX 76009 PH. 817-783-3444 FAX 817-783-6002



WHAT IS POLYMER CONCRETE?

POLYMER CONCRETE IS SIMILAR TO CONVENTIONAL CONCRETE IN THAT IT CONTAINS SELECTED BLENDS OF AGGREGATES AND FILLERS WHICH ARE HELD TOGETHER UTILIZING A BINDER. THE BINDER IS A HIGH STRENGTH, CORROSION RESISTANT, THERMOSETTING RESIN. THIS RESIN SYSTEM REQUIRES A CURING AGENT (CATALYST) WHICH WHEN COMBINED WITH THE RESIN, TRANSFERS THE RESIN AND CURING AGENT FROM A LIQUID TO A SOLID (THERMOSET POLYMER) WHICH BONDS TO THE AGGREGATE, VARIOUS FILLERS, AND INTERNAL REINFORCEMENT.

HOW IS POLYMER CONCRETE USED?

IN ORDER TO BUILD THE PIPE AND STRUCTURES USED IN TODAY'S COLLECTIONS SYSTEMS, THE POLYMER CONCRETE IS POURED INTO FORMS BEFORE THE CURING AGENT HARDENS THE MATERIAL. THE PROCESS IS MUCH LIKE THE WET-CAST PROCESS USED IN CONVENTIONAL PORTLAND CEMENT CONCRETE PIPE. THE TYPE AND SHAPE OF FORMS HAS ALMOST NO LIMIT, GIVING POLYMER CONCRETE PRODUCTS ENDLESS APPLICATIONS AS INFRASTRUCTURE COMPONENTS.

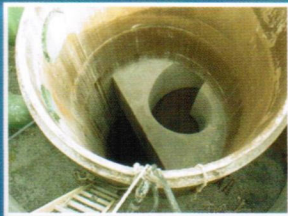
HOW DOES IT PERFORM?

POLYMER CONCRETE HAS SUPERIOR PERFORMANCE CHARACTERISTICS. IT CAN BE USED IN A PH RANGE OF 1 - 13. THE MATERIAL ITSELF IS IT'S OWN PROTECTION FROM CORROSION. THERE IS NO NEED TO COAT OR LINE POLYMER CONCRETE. BEING A STEEL REINFORCED CONCRETE PRODUCT, IT CAN HANDLE SEVERE LOADING.



WWW.USCOMPOSITEPIPE.COM

800 CR209 ALVARADO, TX 76009 PH. 817-783-3444 FAX 817-783-6002



STEEL REINFORCED POLYMER CONCRETE

ABOUT US:

LOCATED SOUTH OF FT. WORTH, TEXAS, U.S. COMPOSITE PIPE IS PART OF THE KTI FAMILY OWNED BUSINESS. THE THOMPSON FAMILY, OWNERS OF KTI, INC. HAVE ALWAYS BEEN ABLE TO PRODUCE THE VERY BEST QUALITY PRODUCT ALONG WITH OUTSTANDING CUSTOMER SERVICE. OUR PRODUCTS ARE PRODUCED TO CURRENT ASTM STANDARDS AND WE STAND BEHIND OUR PRODUCTS 100%. IN TODAY'S TREND OF OVERSEAS OUTSOURCING AND FOREIGN OWNERSHIP, WE TAKE GREAT PRIDE IN BEING ONE OF THE FEW AMERICAN OWNED PIPE PRODUCERS IN THE UNITED STATES.



POLYMER CONCRETE ADVANTAGES

• STRONG

OUR TYPICAL POLYMER CONCRETE DESIGN COMPRESSIVE STRENGTH IS 9000 PSI, ALLOWING DESIGN FLEXIBILITY WHILE RETAINING FULL STRENGTH PERFORMANCE

• DURABLE

AS A UNIFORM MATERIAL, POLYMER CONCRETE HAS CONSISTENT PHYSICAL PROPERTIES BUILT IN, NOT ADDED ON

• ADAPTABLE

U.S. COMPOSITE PIPE IS COMMITTED TO FULL LINE PIPE AND PRECAST MANUFACTURING, AS WELL AS CUSTOM PRODUCTS FOR SPECIAL APPLICATIONS

HERE ARE A FEW
ASTM STANDARDS
U.S. COMPOSITE PIPE
USES

C76	A82
C478	A185
C443	A496
D6783	A497
C33	A615
C267	A615M



USCP
U.S. COMPOSITE PIPE, INC.

WWW.USCOMPOSITEPIPE.COM
800 CR209 ALVARADO, TX 76009 PH. 817-783-3444 FAX 817-783-6002